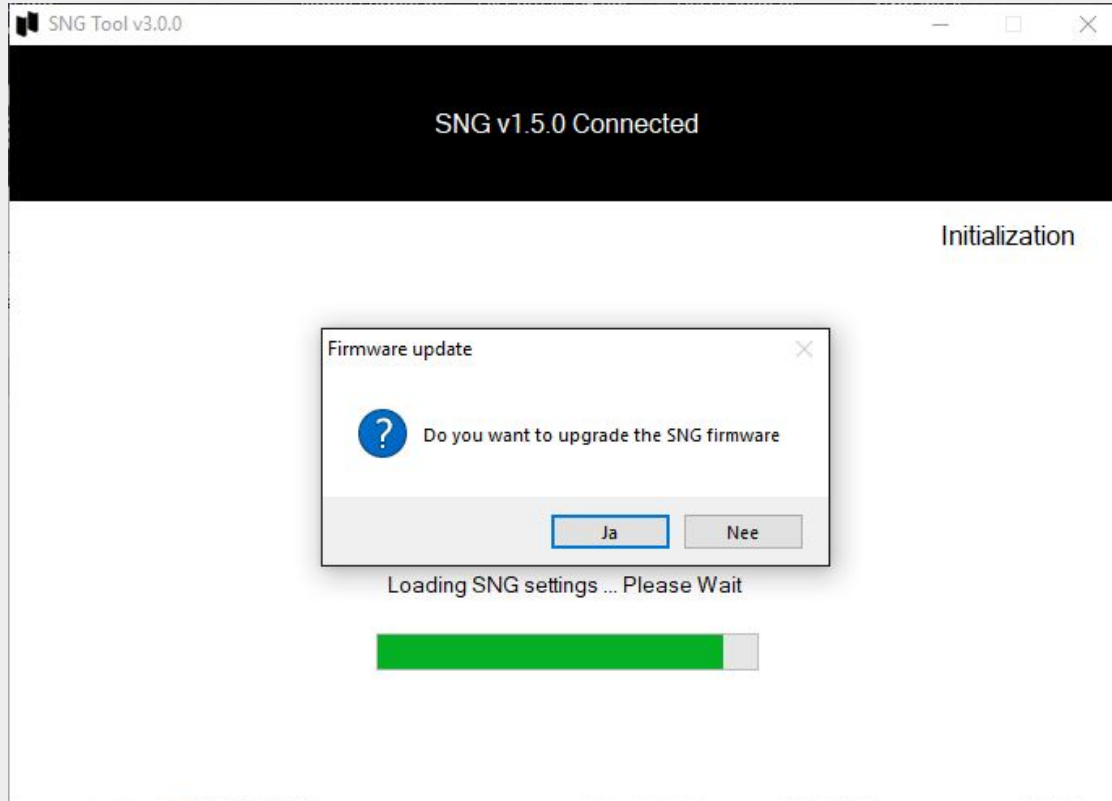


IMMOTION SNG Tool

Overview

Integrated Firmware Update



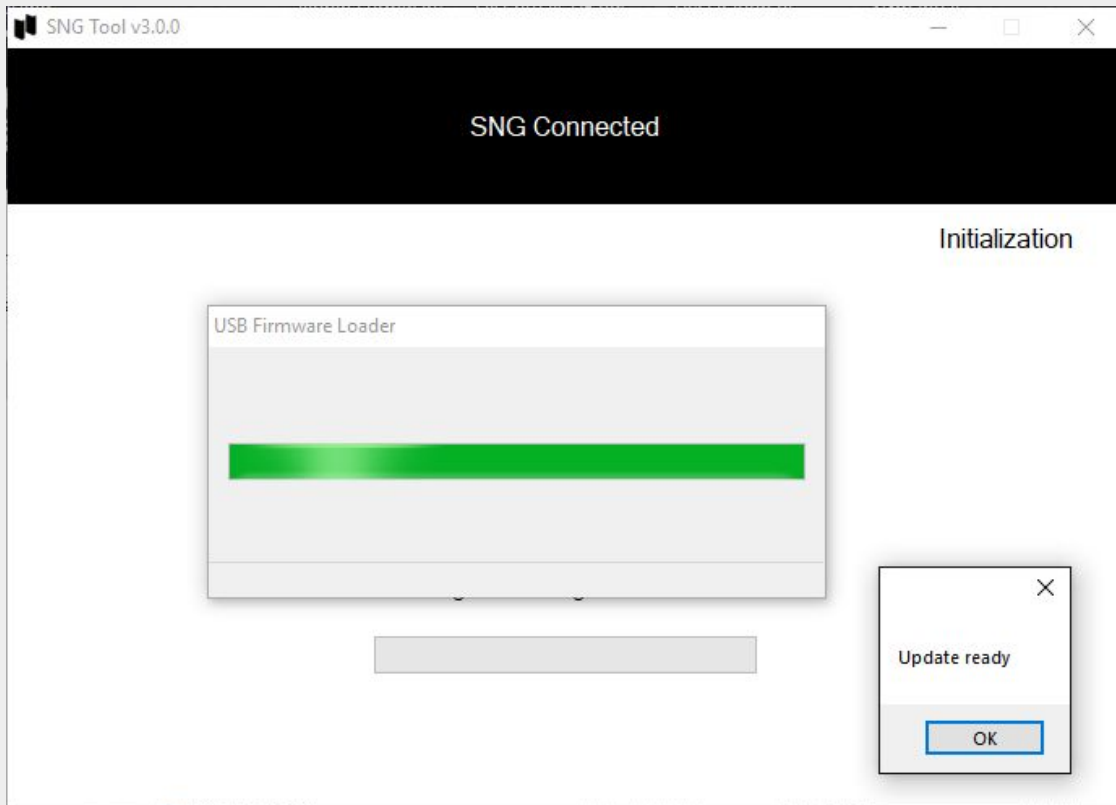
The IMMOTION SNG tool has a build in firmware update.

If the tool detects that your sng is using a older version firmware it will bring up a prompt to upgrade the firmware.

Please note: once yes is pressed there is no canceling the update.

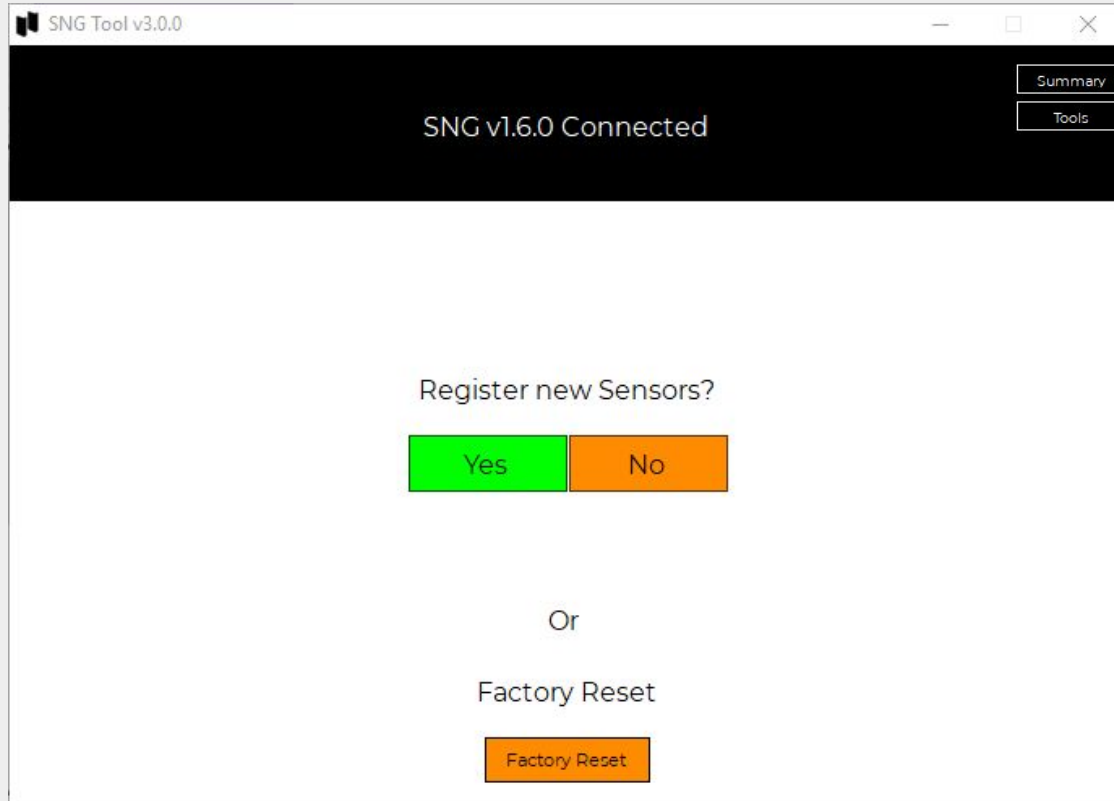
Powering of during the update may cause undesirable effects.

Integrated Firmware Update



Once the IMMOTION SNG tool is done upgrading the firmware it will tell you the update is ready, and restart the tool.

Sensor registration



The first step in the SNG tool is to register sensors. this step can be skipped if there are already sensors registered.

Please note that the factory reset option is also available here.

The factory reset button will clear the internal memory and remove all sensors registered in the SNG.

Sensor registration

SNG Tool v3.0.0

SNG v1.5.6 Connected


Summary

Tools

Searching for new Sensors...

Please power on the new sensors to register them into the SNG.

By battery powered People Counters this can be done by placing the batteries into the Receiver (PRx)

Node	Name	Signal
00-04-A3-3B-91-7B	Sensor0	

Continue

While the SNG is in registration mode you can learn in the sensors by placing the batteries in the sensor or power on the sensor.

Colors indicate the status of the sensor registration.

Green = New sensor
 Blue = Sensor is already registered with this SNG.

Location configuration

SNG Tool v3.0.0

SNG v1.5.6 Connected

Summary

Tools

Identify Sensors

The sensors are located on the Location with Location code:

Node	Version	Sensors	Name	Position Code	Delete
00-04-A3-3B-91-7B	2.3	Counter_A	Sensor0	Pos0	X

Please use names and position codes corresponding to the position where the sensors are placed.
For example: Entrance

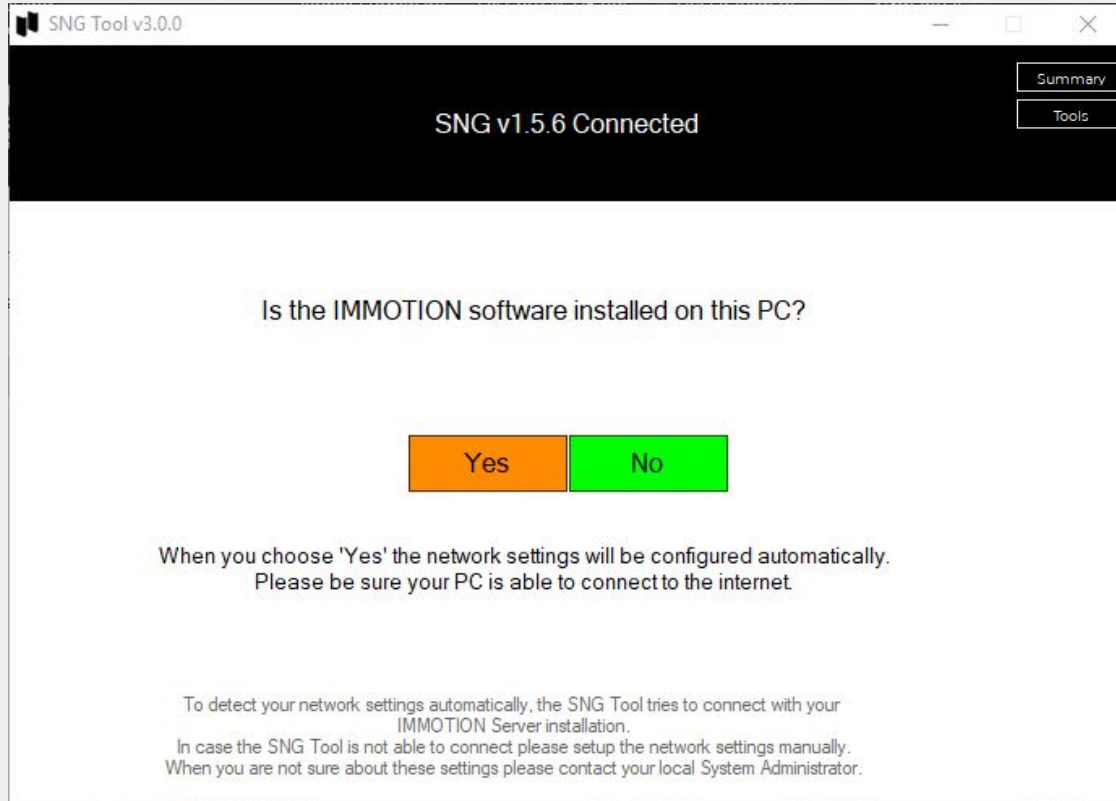
Continue (Save)

Setting up location information and sensor information.

This information will be used in the software.

Please note: the location **can not** be changed later in the software, you will need to reconfigure the SNG again.

Network settings



SNG Tool v3.0.0

SNG v1.5.6 Connected

Summary

Tools

Is the IMMOTION software installed on this PC?

Yes No

When you choose 'Yes' the network settings will be configured automatically.
Please be sure your PC is able to connect to the internet.

To detect your network settings automatically, the SNG Tool tries to connect with your IMMOTION Server installation.
In case the SNG Tool is not able to connect please setup the network settings manually.
When you are not sure about these settings please contact your local System Administrator.

Configuring network setting can be done either manual or automatic.

Network settings

SNG Tool v3.0.0

SNG v1.5.6 Connected

Summary

Tools

Network Settings

Enter the IP Address or the DNS name of the PC where the IMMOTION software is installed. The SNG will connect to this PC to forward the sensor data to the database. Please be sure no firewall is blocking the communication of the SNG on tcp port 55555.

Ask your IT specialist for more details about your network.

IMMOTION Server

Server port

SNG Network Settings

Use DHCP to obtain IP configuration automatically

Use a static IP Configuration

IP Address

Subnet Mask

Gateway

DNS Server

MAC 00:08:DC:4F:A5:06

Version 4.06

Finish

By default the IP settings will be set to DHCP, but a static IP can be configured when needed.

Please enter the server IP and port number of your IMMOTION Software installation.

In case you are having an IMMOTION Cloud Account, you have received the Server and port settings.

Summary

SNG Tool v3.0.0

SNG v1.5.6 Connected

Summary

Tools

Gateway Configuration

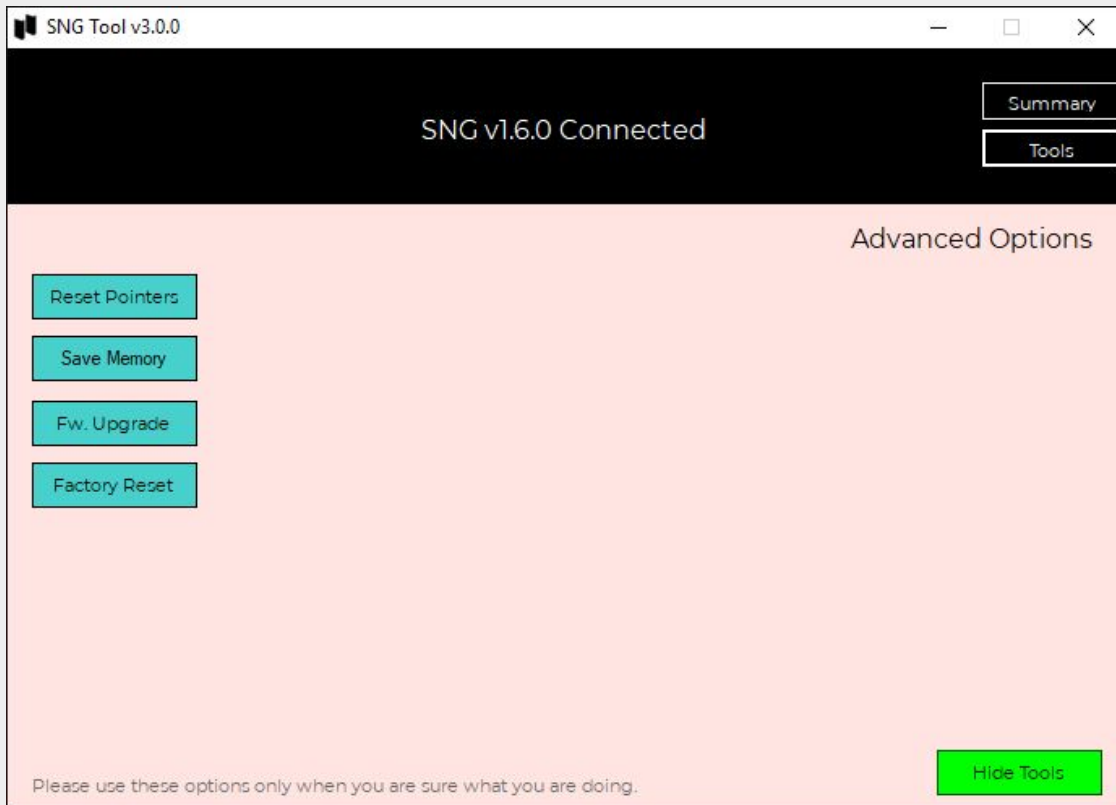
Property	Value
SNG Version	1.5.6
SNG write pointer	0x0020 - 32
SNG Ethernet read pointer	0x0020 - 32
SNG USB read pointer	0x0020 - 32
SNG Info size	1024 Bytes
SNG Hardware ID	FF-FF-FF-FF-FF-FF
Maximum Nodes	10
Free Nodes	10
SensorServer Host	192.168.2.84
SensorServer Port	55555
IP Address	192.168.2.98
Subnet Mask	255.255.255.0
Gateway	192.168.2.254

Live Data

Exit

Here you will see a summary of all the settings and configurations.

Advanced options



The following features are available via the Tools button.

Reset pointers:

Resets the internal memory pointers to the factory default values, but keeps sensors registered.

Save memory:

A complete backup of the internal memory of the SNG for debugging and disaster recovery.

Fw. Upgrade:

Allows you to upgrade the firmware of the SNG.

Factory reset:

Resets the SNG back to factory defaults deleting all data and sensors.

Live data

SNG Tool v3.0.0
— □ ×

SNG v1.5.6 Connected

Summary
Tools

Sensor Communication

Time	Node ID	Sensor	Position	Data	Signal
17-10-2018 11:03:49	00-04-A3-3B-91-7B	Sensor0	Pos0	Counter A: 1 - 0x80 Counter B: 1 - 0x80	

This window displays the wireless data sent from the sensor to the SNG

Back

Here on the live data page you can see the communication between sensor and SNG if both are powered.

